



Curtin Singapore

STUDENT HANDBOOK

FOR UNDERGRADUATE AND POSTGRADUATE PROGRAMS

Make tomorrow better.

This handbook has been designed to assist you during your studies at Curtin Singapore.



Table of contents

Click on a topic below

Welcome to Curtin Singapore	3	Standard code of conduct	38
Introducing Curtin Singapore.....	4	Campus resources and facilities	42
Academic information	8	Financial information.....	51
Attendance requirements	25	Campus security and safety	57
Appeals information.....	27	Quality assurance.....	59
Student support services	29	Contact information	62
Student administration.....	33		
Confidentiality and privacy policy.....	37		

Welcome to Curtin Singapore

Congratulations and welcome to Curtin Singapore, a campus of Curtin University.

Curtin University is one of Australia's largest universities with more than 50,000 students studying across 9 campus locations including Singapore. With a strong research culture, a history of excellence in teaching and a tradition of working in close partnership with business and industry, it has built an international reputation for the quality of its graduates. Curtin University is ranked in the top 1% of universities by the QS World University Rankings. The Faculty of Business and Law is recognised as an elite global business school through accreditation by the **Association to Advance Collegiate Schools of Business (AACSB) International** - Only 5% of business schools in the world has been awarded this accreditation. Curtin graduates are known for having the skills and knowledge that make a difference in the marketplace. Students studying at Curtin Singapore are students of Curtin University.

We trust that your time with us will be enjoyable and rewarding, both in terms of academic achievement and personal development.

This Student Handbook is a guide for you throughout your time at Curtin Singapore. We encourage you to read it carefully as it has the necessary information you will need as a student to make the most of your studies and campus life, including information on support services available.

We look forward to working with you over the course of your degree and to welcoming you into the prestigious Curtin Alumni following your graduation.



Professor Linley Lord

Pro Vice-Chancellor and President
Curtin Singapore





Introducing Curtin Singapore

Curtin University is a vibrant, forward-thinking, innovative university where you can move forward in your chosen career.

The University has a strong, international focus, with campuses in Perth, Singapore, Sarawak, Mauritius and Dubai, offering internationally recognised courses that prepare you to work in the competitive global market.

Delivering its programs in Singapore since 1986, Curtin took its relationship with Singapore one step further when we inaugurated our Curtin Singapore campus in 2008.

At Curtin Singapore we have a dynamic emphasis on innovative teaching methods, strong industry links and highly employable graduates that are synonymous with the Curtin name. Curtin Singapore is supported by a Curtin-appointed Pro Vice-Chancellor and President who oversees the delivery of Curtin's approach to teaching and learning, and ensures quality and standards are maintained.

Whether you study at Curtin Singapore, Malaysia, Mauritius, Perth or Dubai, you can graduate with the skills to launch your career anywhere in the world.

Vision

Working in partnership we will make a difference for people and our planet.

Strategic Positioning

Curtin Singapore is the globally recognised, regionally relevant university of choice for students, staff, and our communities.

Core Values

Integrity - to act ethically, honesty and with fairness

Respect - to listen, value and acknowledge

Courage - to lead, take responsibility and question

Excellence - to strive for excellence and distinction

Impact - to empower, enable and inspire

Introducing Curtin Singapore continued

Culture statement

Regardless of who you are or where you come from, you'll find Curtin to be a friendly and relaxed place where respect for one another is a part of everyday life. Curtin is a culturally diverse community where you will be accepted and treated fairly.

At Curtin, everything we do is designed with one overarching goal in mind: to have a positive effect on our students and the wider community. In order to achieve that goal we provide students and staff with a welcoming environment that's founded on five core values:

Integrity - to act ethically, honesty and with fairness

Respect - to listen, value and acknowledge

Courage - to lead, take responsibility and question

Excellence - to strive for excellence and distinction

Impact - to empower, enable and inspire

Our commitment to equal opportunity is reflected in a range of policies and support services to ensure all students and staff, irrespective of race, gender, beliefs or culture, receive fair and just treatment.



Introducing Curtin Singapore continued

Academic Board

The Curtin Singapore Academic Board consists of distinguished members from the academic field and industry.

Chair

Professor Linley Lord
Pro Vice-Chancellor and President
Curtin Singapore

Members

Professor Seth Kunin
Deputy Vice-Chancellor, Global
Curtin University

Professor Paul Brunton
Deputy Vice-Chancellor, Academic
Curtin University

Mr Malcolm Baigent
Chief Executive Officer
University Partnerships Australasia
Navitas Limited

Professor Chris Rawson
Dean, Learning & Teaching, Faculty of Science and Engineering

Associate Professor Subra Ananthram
Dean, Learning & Teaching, Faculty of Business and Law

Associate Professor Nicole Slatter
Dean, Learning & Teaching, Faculty of Humanities

Associate Professor Marina Ciccarelli
Dean Learning & Teaching, Faculty of Health Sciences
Curtin College

Associate Professor Lim Swee Hia
President, Singapore Nurses Association

Ms Quek Wai Lan Grace
External Member

Dr Ashley Tong
Academic Staff Member

Jyotirmay Vyas and Bernard Koo
Curtin Singapore Student Member

Introducing Curtin Singapore continued

Examination Board

The Curtin Singapore Examination Board ensures the integrity of examination administration and that processes are in accordance with appropriate academic standards.

Chair

Professor Linley Lord

Pro Vice-Chancellor and President
Curtin Singapore

Members

Ms Kerry Valentine

College Director & Principal
Curtin College

Mr Nick Swallow

Director of Studies (English)
Curtin Singapore

Dr Saravanan Sathiyaseelan

Director of Academic Services
Curtin Singapore

Mr Shaowen Ng

Senior Manager (Academic)
Curtin Singapore





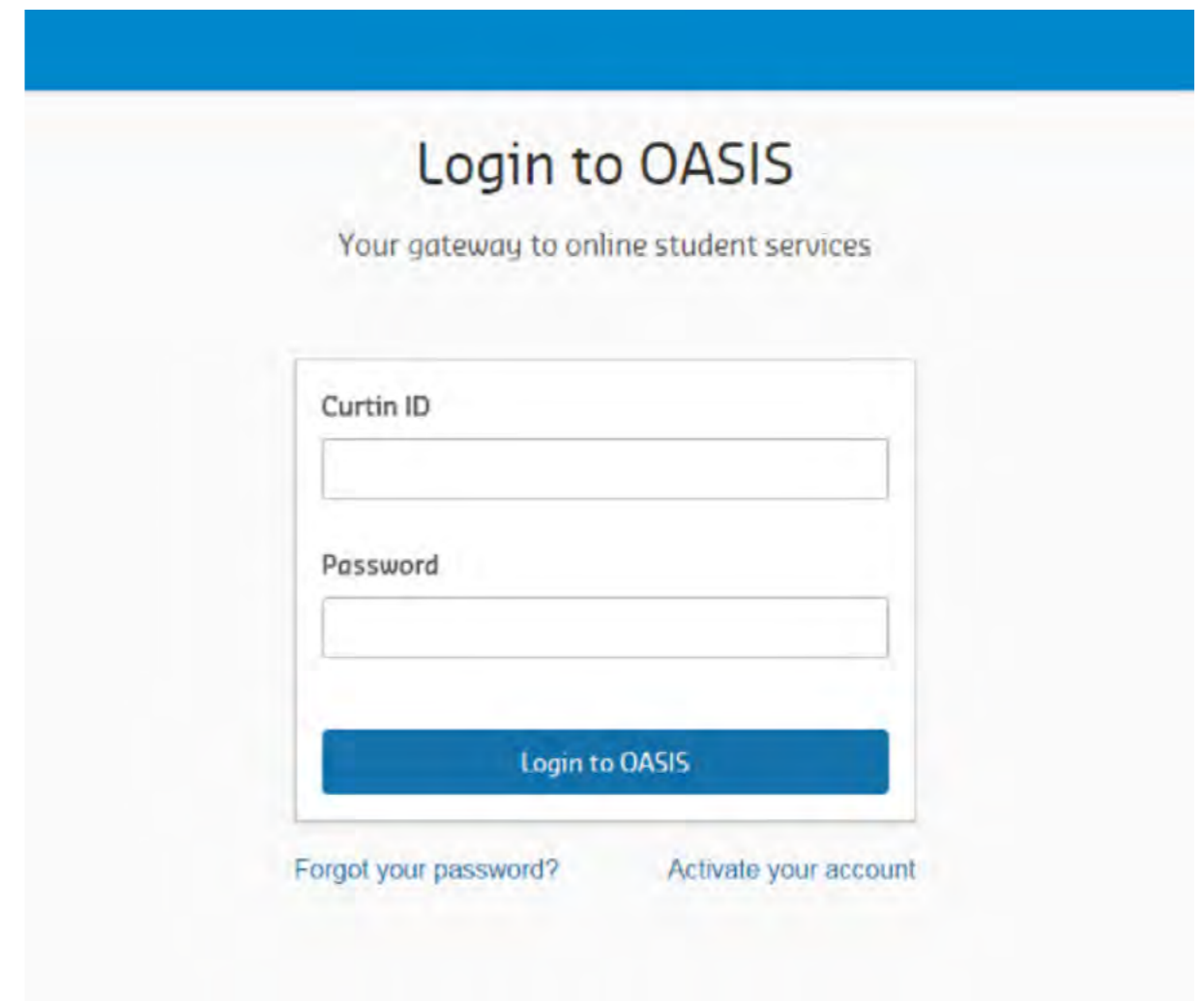
Academic information

ONLINE student services: OASIS— Online Access to Student Information Services

OASIS is a secure web portal to electronic services provided to Curtin students. To log onto OASIS, go to oasis.curtin.edu.au

Once logged into OASIS you will have access to a range of services including:

- Official Communications Channel (OCC)
- student email
- e-Student (your student record, including your personal details, enrolment details and results)
- learning support and services such as the library and Blackboard
- Sanctions Channel (display any sanction currently recorded against a student)
- Curtin news and events



The screenshot shows the OASIS login interface. At the top, there is a blue header bar. Below it, the text "Login to OASIS" is displayed in a large, bold font, followed by the subtitle "Your gateway to online student services". The main content area contains a login form with two input fields: "Curtin ID" and "Password". Below the "Password" field is a blue button labeled "Login to OASIS". At the bottom of the form, there are two links: "Forgot your password?" and "Activate your account".

Academic information continued

Who has access to OASIS?

Once you are offered a place in a course that leads to an award at Curtin, you will automatically have access to OASIS and its core services. Additional services will be made available to you through OASIS when you enrol. If you are terminated from your course, withdrawn or deferred, you will lose your access to OASIS after 45 days. If you did not accept your offer before its lapse date, you will also lose your OASIS access. If you take an approved leave of absence, you will continue to have access to OASIS over your period of leave. After completing your course at Curtin, you will retain lifetime access to OASIS. Your academic email access will cease 90 days from when your course is set to complete.

When can I get access to OASIS?

As a new user, you will need to activate your account by going to oasis.curtin.edu.au. You then need to click on 'Activate your account' located below the Login button. Follow the instructions on screen to activate your account.

Once your account is activated, go to oasis.curtin.edu.au and type in your Curtin ID (8-digit Student ID number) and password, then click 'Login'.

OASIS support

If you have read and followed the instructions provided in the help menu and still experience difficulties with OASIS, lodge an OASIS Central support request via the web form (click on 'Contact Us' located on the top right corner of the OASIS login screen).

Official Communication Channel (OCC)

Curtin delivers official communication electronically via the OCC in OASIS. It is your responsibility to log in to OASIS regularly to read these communication. You should check the OCC inbox two or three times a week. Curtin is able to monitor if students have read their official communication.

Important information such as the Class Timetable publication will be via the OCC.

Email access

Your student email account can be accessed from OASIS at oasis.curtin.edu.au. To access your email, click on the email inbox link on your OASIS 'Welcome' tab.

Whilst your email account is for your personal use, Curtin Singapore and your lecturers will also contact or send important information to you via your email account. When emailing the University, students are required to use their student email account, as numerous areas of the University will not communicate with a non-Curtin email address for privacy and security reasons.

Essential information such as timetable changes or enrolment matters will be sent to your student email. It is recommended that you check your student email every day.

Academic information continued



Blackboard– Curtin’s learning management system

Blackboard provides access to a broad range of resources and learning activities via the Internet. Online resources for your course may include:

- course content: unit outlines, lecture notes, iLecture recordings and essential readings
- communication tools: discussion forums, blogs, wikis, Blackboard Collaborate virtual classroom and email
- assessment: quizzes, tests and online submission of assignments
- internet resources: links to relevant websites around the world.

The level of Blackboard integration in each unit depends on the requirements of the unit and your mode of study. Check with your unit coordinator, lecturer or tutor for further information. To access Blackboard, log onto OASIS (oasis.curtin.edu.au), click on the ‘My Studies’ tab and then click on the link to Blackboard. Further assistance is available from the ‘Student’ tab on the Blackboard web page.

Academic calendar

The Academic Calendar lists down key dates of each study period that you should take note of. Details shared include first day of class, last day to enrol and withdraw from a unit, amongst other key dates.

You can find the Academic Calendar at <https://students.curtin.edu.sg/student-essentials/academic-calendar/>

Census Date - the census date is the date at which an enrolment is considered to be final. If you are a student, any withdrawal you make after the study period census date will incur an academic penalty (i.e. a WD grade) and a financial penalty (i.e. no refund of your tuition fees).

Credit for Recognised Learning (CRL)

Students who have previously undertaken studies at diploma or university level may apply for Credit for Recognised Learning. CRL or exemptions are usually assessed on qualifications and transcripts submitted at the time of application.

If you wish to apply for CRL, you need to lodge an application supported with transcripts and relevant unit outlines via study.curtin.edu.au/credit/apply/

Students are advised not to enrol into any unit for which an application for CRL has been submitted.

Academic information continued

Enrolment

As a full-time student, you must be enrolled in four units in each study period or two units if you are a part-time student unless you have less than the required units to complete your course or have prior approval from the Office of Pro Vice-Chancellor on the basis of academic intervention, compelling or compassionate grounds.

Enrolment of units take place prior to the start of each study period via e-Student on OASIS or by submitting an Enrolment Form. In order to complete your enrolment, class registration on Axis will have to be done as well. Curtin Singapore reserves the right to cancel or withdraw units at its discretion.

It is your responsibility as a student to check that your enrolment is correct and arrange to have it updated if it does not accurately reflect your situation.

Enrolment variations

Change in unit enrolment

If you decide to change your enrolment, you may do so by lodging an Enrolment/ Change of Enrolment Form available at this link: students.curtin.edu.sg/student-essentials/forms-and-documents/. Indicate the units to be enrolled and/or withdrawn on the form, and submit it via email to academic@curtin.edu.sg.

The last day to change your unit enrolments is the first Friday of each study period. No addition of units will be accepted after this day.

Unit withdrawal by census date (week 1 to week 4)

A unit withdrawal approved on or before the census date has no financial and academic penalty (the unit enrolment will not be recorded on the academic transcript).

Unit withdrawal after census date but up to and including the last date to withdraw

Unit withdrawal after census date but up to and including the last date to withdraw will incur an academic penalty (the grade for the unit will be recorded as “WD” (Withdrawn) on the academic transcript) and a financial penalty (i.e. no refund of your tuition fees).

Unit withdrawal after the last date to withdraw

A unit withdrawal submitted after the last date to withdraw will only be accepted and approved under special circumstances. If your application is successful, you will still incur an academic penalty (the unit will be recorded as ‘WD’ (Withdrawn) on the academic transcript) and a financial penalty (i.e. no refund of your tuition fees).

Course withdrawal

Course withdrawal procedure

If a student wishes to withdraw, he/she should indicate the withdrawal on the Enrolment/Change of Enrolment Form and make an appointment with a Student and Academic Services Officer. An interview session will be conducted prior to completion of course withdrawal formalities. Students under the age of 18 years are required to obtain their parent’s or guardian’s consent prior to submission.

Academic information continued

Following an approved course withdrawal, Curtin Singapore will:

- withdraw the current enrolment
- terminate the existing Student Contract
- cancel the Fee Protection Scheme (FPS) insurance policy where applicable, and the Student's Pass for international students
- refund any applicable fees in accordance with the Curtin Singapore Refund Policy, upon receipt of the Application for Refund of Fees form
- send an email confirmation of the course withdrawal
- issue past attendance records to students who are enrolling in another course with another local institution upon request.

The course withdrawal request is processed within 4 weeks of the submission of the Enrolment/Change of Enrolment form.

The official transcript will not be issued for an incomplete course. Transcript will be provided to a student on payment of the prescribed fee.

Policy on course withdrawal

The course withdrawal policy is covered under the Variation of Enrolment policy. The Variation of Enrolment policy is published on the Curtin Singapore website and is found on this link: <https://curtin.edu.sg/wp-content/uploads/sites/3/2019/01/Variation-of-Enrolment-Policy.pdf>

Change of major

Change of major procedure

After commencing on the course, a student may feel that the choice of major undertaken is not suitable due to personal or academic reasons. The student may consider applying for a change of major by submitting a request via the Enrolment/Change of Enrolment Form via email to academic@curtin.edu.sg. Approval of an application is determined by Curtin University and credit for recognised learning is re-assessed based on the new major.

Change of Major application can be submitted before Week 9 of the current study period for it to be effective in the following study period. For students under 18 years of age, a written consent from their parent's /legal guardian's must be submitted together with the Change of Major application.

An appointment will be arranged to assist the student in making an informed decision by providing relevant information relating to the impact to their academic studies.

The Change of Major application will be submitted to Curtin University for assessment and approval. The student will then be informed of the outcome via email. Change of Major application is processed within 4 weeks upon submission of the Change of Major request.

For approved applications, students who decide to proceed with the change of major, will have their existing Student's Pass cancelled and a new Student's Pass will be lodged with Immigration and Checkpoints Authority (ICA) subject to approval.

Academic information continued

Students will also sign a new Student Contract and the existing Student Contract will be terminated. The Fee Protection Insurance of the existing course will be terminated with the insurance provider and a new insurance policy will be purchased accordingly.

For approved applications, students who decide not to proceed with the change of major, will continue with their original enrolment and course.

Policy on change of major

The change of major policy is covered under the Variation of Enrolment policy. The Variation of Enrolment policy is published on the Curtin Singapore website and is found on this link: <https://curtin.edu.sg/wp-content/uploads/sites/3/2019/01/Variation-of-Enrolment-Policy.pdf>

Leave of absence

Leave of absence procedure

A student may apply for Leave of Absence, up to a maximum period of 12 months, in the case of one of the following situations:

- no available unit for study in a study period;
- unable to continue studies in a study period due to valid reason(s)

A completed Application for Leave of Absence form has to be submitted by the census date. All applications will be reviewed on a case by case basis and all information provided and circumstances leading to a request as well as regulatory requirements will be taken into account. An academic and financial penalty may apply depending on the time the request is submitted.

Students under the age of 18 years are required to obtain their parent's or guardian's consent prior to submission.

Following an approved Leave of Absence, Curtin Singapore will:

- cancel the current enrolment
- cancel the Fee Protection Scheme (FPS) insurance policy where applicable, and the Student's Pass (for international students)
- send an email confirmation of the approved Leave of Absence

The Leave of Absence request is completed within 4 weeks of the submission of the Application for Leave of Absence form.

At the approaching end of the approved Leave of Absence, students are required to email academic@curtin.edu.sg on their intention to resume studies. International students must email at least 7 weeks prior to the expiry of their Leave of Absence.

Students who do not enrol for a period of 2 study periods and do not have an approved Leave of Absence will be considered as AWOL (Absence Without Leave). A new application to admit into the course will be required if an AWOL student wishes to return to studies.

Policy on leave of absence

The leave of absence policy is covered under the Variation of Enrolment policy. The Variation of Enrolment policy is published on the Curtin Singapore website and is found on this link: <https://curtin.edu.sg/wp-content/uploads/sites/3/2019/01/Variation-of-Enrolment-Policy.pdf>

Academic information continued

International experience

Apply for a Campus Transfer or Student Exchange to broaden your horizons, explore a new culture, and expand your personal and professional networks.

Campus transfer

A student may request for a transfer between Curtin campuses during their course of study but is subject to conditions. Approval of an application is determined by Curtin University and is assessed based on good academic record. Students under the age of 18 years are required to obtain their parent's or guardian's consent prior to submission.

Following an approved transfer of campus and the receipt of a student's confirmation on the campus transfer, Curtin Singapore will:

- terminate the existing Student Contract
- cancel the Fee Protection Scheme (FPS) insurance policy where applicable, and the Student's Pass for international students
- refund any applicable fees in accordance with the Curtin Singapore Refund Policy, upon receipt of the Application for Refund of Fees form
- send an email confirmation on the campus transfer approval

Students from the certain countries will need to complete an additional form - Genuine Student Assessment Form (GSAF). Please approach Student Connect to find out if you are required to fill out the GSAF.

Please note that after approval, the respective campus transferred to will provide the required formalities, such as, fees and visa application to the student. The Campus Transfer application form is available at this link:

<https://students.curtin.edu.sg/student-essentials/forms-and-documents/> and the GSAF is available upon request from academic@curtin.edu.sg

Policy on campus transfer

The campus transfer policy is covered under the Variation of Enrolment policy. The Variation of Enrolment policy is published on the Curtin Singapore website and is found on this link: <https://curtin.edu.sg/wp-content/uploads/sites/3/2019/01/Variation-of-Enrolment-Policy.pdf>

Student exchange

Students at Curtin Singapore Campus may apply to study one semester at Curtin Perth Campus while paying similar tuition fees to Curtin Singapore but is subject to conditions. Approval of an application is determined by Curtin Singapore.

Students are eligible to apply if they:

- successfully completed two trimesters in the Bachelor of Commerce or Bachelor of Communications (Top-up) program at the point of application
- have a course-weighted average of 60 or above*
- passed all of their units*
- are on Good Standing

* Students who do not meet this criteria can still apply and their application will be reviewed on a case-by-case basis.

Academic information continued

Successful applicants will need to pay for their own expenses including but not limited to visa application fee and other associated fees, Overseas Student Health Cover (OSHC), airfare, living costs and accommodation. They must follow the conditions of the Australian student visa such as maintain full-time enrolment and attendance, maintain satisfactory academic performance, maintain OSHC and provide the Department of Immigration and Citizenship with a home address. You can email academic@curtin.edu.sg if you wish to apply for a Student Exchange.

Academic integrity

Academic integrity at its core is about honesty and responsibility and is fundamental to Curtin Singapore's expectations of you. This means that all of your work should be your own and it should be underpinned by integrity, which means to act ethically, honestly and with fairness.

Academic misconduct

Academic misconduct means acting dishonestly or unfairly in connection with any examination or other assessment task, or other academic work.

Types of academic misconduct

Plagiarism

Plagiarism means presenting the work or property of another person as if it were one's own without appropriate acknowledgment or referencing. Plagiarism constitutes academic misconduct and parties involved will be penalised accordingly.

Plagiarism includes:

- Copying of sentences, paragraphs or creative products (in whole or in part) which are the work of other persons without due acknowledgment. Creative products include webpages, books, articles, theses, unpublished works, working papers, seminar and conference papers, internal reports, lecture notes or recordings, computer files, images or video
- Too closely paraphrasing sentences, paragraphs or themes without due acknowledgment
- Using another person's work (including words, music, creative or visual artefacts, computer source code, designs, problem solutions or ideas)
- In the case of collaborative group projects, falsely representing the individual contributions of the collaborating partners
- Submitting work which has been produced by someone else – including friends, family or a paid contracting service (This is known as contract cheating, assessment outsourcing or ghost writing.)
- Submitting one's own previously assessed or published work for assessment or publication elsewhere, without appropriate acknowledgement (self-plagiarism)
- Using language translation or paraphrasing services (either online or contracted) to disguise original source text (cross-lingual or back translation plagiarism, and spinning)

Academic information continued

Cheating

Cheating means acting dishonestly or unfairly in order to gain an advantage. Examples include:

- Cheating in an exam, test or supervised assessment activity.

Considered Academic misconduct:

- Being in possession of unauthorised materials
- Having a mobile phone or other electronic device in an examination or testing environment
- Copying answers from another person or permitting another student to copy answers
- Exchanging notes, talking or communicating with another student in an examination or test
- Improperly obtaining prior knowledge of an examination or test paper and using that knowledge in the examination or test or providing that information to a student(s) who are yet to undertake the examination or test

Considered General misconduct:

- Removing an examination paper from an examination room when it is specified that the paper is not to be retained by the student; storing or sharing an examination paper that was illegally obtained
- Disrupting an examination or assessment activity in any way
- Impersonating a student in an examination or arranging for another to impersonate, take or complete the assessment on your behalf.
- Cheating in an assessment or other assessable work by submitting written or creative work which has been drafted or produced by someone else – including friends, family or a

paid contracting service (this is known as contract cheating, assessment outsourcing or ghost writing) and claiming authorship for it. This includes:

- Allowing someone or an organisation to draft or complete an assessment task on your behalf
- Contracting another person to do the work for you
- Purchasing work from another source
- Allowing or contracting another person to edit and substantially change your work.

Collusion

Collusion occurs when two or more individuals combine their efforts in order to deceive others. In an academic context, this can occur if you work with others on an assignment that is meant to be individual or if you help another student to complete an assignment against instructions. This is also referred to as ‘collaborating too closely.’ The result is that you submit assignments which are very similar without admitting to collaboration.

While collusion is considered to be a different form of academic misconduct to plagiarism, similar penalties will apply to both students involved in the incident.

Collusion differs from collaboration in that the latter describes an activity in which students have been given permission to work together to accomplish a task. With collaboration, students are usually asked to submit a joint assignment under joint names. In order to avoid misunderstandings, it is essential that task parameters (i.e. how the task should be done and by whom) are specific and transparent.

Academic information continued

Falsification or fabrication of data or other content

Falsification or fabrication of data occurs when data is misrepresented within an assessment or research. Examples include:

- Fabrication is making up results and reporting them
- Falsification is altering results so that the research is not accurately represented

Academic misconduct 'other'

Academic dishonesty that does not fall into the other misconduct categories.

- Falsifying medical certificates for assessment extension.

Curtin Singapore regards any act of cheating, collusion, falsification or fabrication of data, or dishonesty by way of plagiarism very seriously. There are strong penalties for breaches including annulment of results or termination from Curtin Singapore.

The following website contains information on how to avoid plagiarism by providing the information you will need to appropriately cite and reference your work: <https://students.curtin.edu.au/essentials/rights/academic-integrity/>

Terminating or withdrawing enrolment

Curtin Singapore has the right to terminate or withdraw a student's enrolment in response to serious misbehaviour or misconduct. Please refer to the Code of Conduct and Refund policy sections contained in this handbook for academic and financial penalties that may apply.

Academic status and conditional

Academic status

All students commence their course with an Academic Status of Good Standing. However, less than satisfactory academic performance will result in a review of the status to either Conditional or Terminated. Notification of Academic Status will be sent electronically via the Official Communication Channel (OCC) in OASIS.

Good standing

The student is achieving satisfactory course progress with a Semester Weighted Average (SWA) of 50 or higher and passing more than 50% of enrolled units for the study period whereby a student is permitted to continue in the course and re-enrol.

Conditional

A student will be placed on Conditional Status if the student obtained a SWA of less than 50 and/or failed 50% or more of the units they were enrolled in for the study period. The student is permitted to continue in the course and re-enrol under conditions as determined.

A student may be placed on Conditional status at the discretion of the Board of Examiners if they fail a core unit in the study period just ended. Their status of Conditional may be continued in subsequent study periods until the failed core unit is passed.

However, if a student meets the criteria for Conditional status for a second consecutive study period, the student may be recommended for Course Termination. Students on Conditional status may be required to study only 3 units in the following study period. Students are encouraged to meet with a Student and Academic Services Officer to receive appropriate academic counselling.

Academic information continued

Terminated

The act of terminating a student from a course on academic performance grounds constitutes the decision that the student has not achieved satisfactory course progress. Students that are on a status of Terminated have had a status of Conditional and a current SWA of less than 50 or failed 50% or more of the units they were enrolled in the study period.

Termination may also occur if a student has a current Conditional status and failed any unit for a second time or failed to satisfactorily complete a practical or clinical placement for a second time.

The student is not permitted to continue in the course or re-enrol in the course without approval from Curtin University.

An international student on a Student's Pass who has been terminated from course will be reported to Immigration & Checkpoints Authority of Singapore (ICA) for cancellation of his/her Student's Pass.

Regulations for the Conduct of Tests and Examinations

Requirement to have a Valid Curtin Student Identification

- All Curtin Singapore students are required to produce their Student ID Card in all tests and examinations and must place the card on their desk where it may be clearly seen by the invigilators.
- Students will not be provided with additional time to complete a test or examination as a consequence of delays in identity verification.

Test and Examination Attendance

- Students are responsible for sitting their examination as advised in any progressive test schedule or examination timetable.
- Failure to be present at the venue during the test or examination will lead to a zero for the test or examination, even if you submit work for the test or examination.

Commencement of the Test and Examination

- Students must arrive 30 minutes before each test or examination begins to ensure that your laptop is able to connect to the Wi-Fi and access Blackboard. A briefing for each test or examination will be conducted at the venue before the start of the test or examination. Students arriving late to the venue will not be granted additional time to complete the test or examination.
- If, for any reason, a test or examination commences late the students will not be disadvantaged. The full reading time (if applicable) and duration will not be reduced.
- If, for any reason, an examination is delayed or interrupted for more than 30 minutes, the examination may be re-scheduled at the discretion of the Manager Progression, Assessment and Awards (centrally scheduled) or Head of School (School scheduled).

Food and Drink in Test and Examinations

- Food or drink, other than water, will not be brought into the test or examination or consumed without permission.

Academic information continued

Approved Test and Examination Materials

- The possession or use of any materials (e.g. type of calculator(s), permitted notes) will be authorised by the invigilator and communicated to the student.
- If unauthorised material is found in the possession of a student or used during a test or examination, they may face disciplinary action.
- Dictionaries are not permitted in any test or examination.

Other Items

- Headwear (e.g. hats, caps) is not to be worn during a test or examination with the exception of those for medical, disability or obligatory religious requirements.

Failure to Undertake/Late Arrival/Early Departure from a Test and Examination

- Students who fail to undertake or are late for a test or examination because they misread the progressive test schedule or examination timetable details or accepted incorrect information on progressive test schedule or examination schedule details from another person, are not entitled to sit the test or examination at any other time or receive any other concession.
- Where a student has attempted to sit a test or examination in a unit but has not been able to complete or undertake the examination due to illness or some other valid reason, the student may apply for an assessment extension as per the Assessment Extension Procedure.

Conduct in a Test or Examination

- Students will adhere to test or examination instructions. Such instructions may define permitted reference materials and expectations regarding academic referencing.
- During a test or examination, a student will not:
 - Communicate with any other student (unless required to do so);
 - Obtain, or endeavour to obtain, unauthorised assistance in their work;
 - Give, or endeavour to give, assistance to any other students; and
 - Behave in such a manner inconsistent with the proper conduct

Mobile phones, electronic devices and other aides

Unless explicitly authorised for the purposes of an examination, students are prohibited from:

- Accessing, being in possession of, or using any mobile phone or unauthorised electronic device;
- Accessing, being in possession of, or using any device capable of storing information or connecting with another device, including but not limited to electronic devices;
- Accessing, being in possession of, or using any notes or unauthorised materials;
- Accessing, being in possession of, using any device capable of communicating with another person; and
- Interacting or colluding with any other person.

Academic information continued

Further requirements specific to Face-to-Face Written Examinations

- Face-to-face written examinations may have 10 minutes reading time in addition to the duration of the examination. During reading time a student may make notes or highlight text, as directed in examination instructions provided by the invigilators.
- No student will:
 - Be admitted to the venue after the first hour (including reading time) has expired;
 - Leave the venue until one hour of the examination has expired;
 - Leave the venue during the last 15 minutes of the examination; and
 - Be re-admitted to the venue after they have left unless, during the full period of their absence, they have been under approved supervision

Maximum allowed period for course completion

The maximum period allowed to successfully complete all units of a given enrolled course is 10 years, with the exception of 7 years for the Bachelor of Science (Nursing) Conversion Program for Registered Nurses and the Postgraduate Programs. This is inclusive of any approved Leave of Absence taken during the course of study.

Assessments

Each unit at Curtin Singapore is assessed throughout the study period. The type of assessments for each unit is described in the Unit Outline. Assessments may include assignments, tests, online assessments, mid-semester tests and final examinations.

Late assessment

Where the submission of a late assessment is permitted, late penalties will be consistently applied in this unit. Where a late assessment is permitted for an assessment item or the entirety of the unit (refer to the Assessment Schedule table in the Unit Outline) and the student does not have an approved assessment extension:

1. For assessment items submitted within the first 24 hours after the due date/time, students will be penalised by a deduction of 5% of the total marks allocated for the assessment task;
2. For each additional 24 hour period commenced an additional penalty of 10% of the total marks allocated for the assessment item will be deducted; and
3. Assessment items submitted more than 168 hours late (7 calendar days) will receive a mark of zero.

Where late assessment is NOT permitted for an assessment item or the entirety of the unit (refer to the Assessment Schedule table in the Unit Outline) and the student does not have an approved assessment extension:

1. All assessment items submitted after the due date/time will receive a mark of zero.

Academic information continued

Please refer to your Unit Outlines, Assessment information on Blackboard or lecturers for all submission dates. It is the student's responsibility to be aware of all submission dates. Assessment extensions may be allowed in some units. This information is indicated on the unit outline. Student may apply for an assessment extension before the due date. Assessment extensions may be granted for valid and justifiable reasons or if the Unit Coordinator is satisfied that the student's circumstances warrant a valid extension.

Moderation of assessments

Assessments are subject to moderation. Moderation is a quality review and assurance process which supports the assessment setting and marking activities of lecturers. It involves the Unit Coordinator undertaking a review of selected papers to ensure the assessment marking is valid and reliable.

In some cases a grade of an assessment or examination may change following moderation to conform to the marking standards of the assessment.

Examinations

The examination timetable is released 4 weeks prior to the examination period through the Official Communications Channel on OASIS. It is the students' responsibility to make themselves aware of the location, time and length of the examination. Examinations may be scheduled on any day or time during the examination period. This may include Saturdays and evenings. Students should not make commitments to any other activities during this period.

Students may be required to sit for 2 scheduled examination papers in a day but shall not be made to take more than 2

examinations in one calendar day. There will always be a break between examinations taken on the same day. If a student has an examination clash after the publication of the examination timetable, a Request for Alternative Examination – Clash form is to be completed and submitted to assessments@curtin.edu.sg. An appropriate alternative examination arrangement will be organised.

If you miss an exam due to ill health or other extenuating circumstances, please complete an Application for Assessment Extension and upload the relevant supporting documents through the online form at <https://students.curtin.edu.au/essentials/forms-documents/forms/> prior to the assessment due date or time. An application may be accepted up to five working days if you are able to provide a reasonable explanation as to why you were not able to submit the application prior to the assessment due date or time.

Please check the examination rules for a list of what you can and cannot bring to an examination. Your unit outline or Blackboard may also specify if you are allowed to bring any study aids/ books/notes to an examination. If you are unsure, please check with your lecturer.

Students must familiarise themselves with the Regulations for the Conduct of Tests and Examinations.

Academic information continued

Further assessment

The Board of Examiners have the discretion over awarding Further Assessments and will consider whether the student has attempted all required assessment tasks and has only marginally failed the unit. Please note that a Further Assessment may not be used to remediate a penalty of misconduct.

Students that have been granted a Further Assessment will be provided at least three working days' notice.

It is the responsibility of students to be available to attend or complete the Further Assessment task at the notified time. A student who commits to other arrangements that prevent them from completing a Further Assessment task will not be entitled to another opportunity.

Deferred assessment

An Application for Assessment Extension and the relevant supporting documents must be submitted through the online form at <https://students.curtin.edu.au/essentials/forms-documents/forms/> before the due date of the assessment. The only exception is where your personal circumstances (e.g. illness) have prevented this. Such requests will only be accepted where the student is able to supply documentation that clearly supports his or her explanation within 5 working days of the due date of assessment.

Approval for Assessment Extension is not automatic. Students may be permitted by the Board of Examiners to defer an examination where specific criteria are met.

Criteria for assessment extension

The student must satisfy the Unit Coordinator and Board of Examiners that the reason for not completing the assessment task was due to exceptional circumstances outside his or her control.

Circumstances that may warrant approval of an Assessment Extension include, but are not limited to:

- student illness, injury or medical condition, supported by a valid medical certificate
- family issues (for example, illness or bereavement, etc.)
- commitments to participate in elite sport or other activities that warrant favourable consideration
- commitment to assist with community service activities
- unavoidable and unexpected work commitments (for example, relocation)

Students will be advised of the outcome on their application for Assessment Extension during the publication of final examination results. A “DA” interim result is the formal approval by the Board of Examiners for a student to complete an outstanding assessment for a unit at a later date.

Students will be provided with at least 3 working days' notice of the new examination date or time and it is the student's responsibility to be available to attend or complete the assessment extension task at the notified time.

A student who commits to other arrangements that prevents him or her from completing a deferred assessment is not entitled to another opportunity to complete the deferred assessment and will forfeit the rights to a deferred assessment. No extensions of deferred examination will be granted under any circumstances.

Academic information continued

Results

The latest examination results can be viewed by students through OASIS approximately 3 weeks after the examination period. Examination results will be withheld where a disciplinary action is pending or course assessment remains outstanding. Please log in to eStudent through oasis.curtin.edu.au to view your results.

Results reported on the Statement of Academic Record include both grades and percentage marks.

University grading system

The table below represents the grading system used at Curtin Singapore. The grades and mark range seen below will correspond with the grades that you will see on e-Student when you view your results.

Semester weighted average

A Semester Weighted Average (SWA) for all students is the calculation of the student's average mark for all units studied in a study period.

GRADES	DESCRIPTION	APPLICATION
GNS	Grade Not Submitted	A result in a unit is not available to the Board of Examiners because marking is not complete. A GNS is an interim grade and will be converted to a final grade within one month after the Board of Examiners. Any extension will be approved by the Academic Registrar (or authorised officer).
X	Outstanding Further Assessment	Student, who otherwise would be awarded a grade of F or FAIL, is granted Further Assessment by a Board of Examiners. Once the Further Assessment is completed, the student will be awarded a grade of either PX (Pass After Further Assessment) or FX (Fail After Further Assessment). In both cases, for grade/mark units the original mark will be retained. An X grade will be converted to a final result by no later than the end of the next study period that the student would normally enrol in. Any extension will be approved by the Academic Registrar (or authorised officer).
DA	Deferred Assessment	Where an assessment task within a unit of study is approved to be done at a later date, but not later than the end of the next study period that the student would normally enrol in. A DA grade will be converted to a final result by no later than the end of the next study period that the student would normally enrol in. If exceptional circumstances exist, the conversion of a DA grade may be extended for one additional study period. However, any extension beyond two additional study periods will be approved by the Academic Registrar (or authorised officer).
OA	Ongoing Assessment	This interim grade may be used where assessment tasks and assessment for a unit cover more than one study period (the study period of enrolment and the subsequent study period of enrolment). The OA grade may be used as an interim (holding) grade until the assessment tasks and assessment are completed for both study periods. An OA grade will be converted to a final result by no later than the end of the next study period that the student would normally enrol in. Any extension will be approved by the Academic Registrar (or authorised officer).



Academic information continued

GRADES	MARK (RANGE)	DESCRIPTION	APPLICATION
10	100		Student has passed a unit classified as a grade/mark unit and achieved a percentage mark in the range specified without Further Assessment.
9	90-99		As above
8	80-89		As above
7	70-79		As above
6	60-69		As above
5	50-59		As above
F	0-99		Student has failed a unit classified as a grade/mark unit
P	Any Passing Grade	0-99	<p>Student has passed a unit classified as a grade/mark unit. This grade can be used where the following applies.</p> <p>For study periods determined by Curtin to be affected by the COVID-19 pandemic, following the release of marks, students may apply to receive a pass designation in place of a passing Grade/Mark. This will be available within units except where a Grade/Mark is required (e.g. Honours units, accreditation requirements). The grade (P) will be recorded on the transcript in place of the original Grade/Mark and the unit will not contribute to the calculation of semester or course weighted averages.</p>
PX	0-99	Pass after Further Assessment	<p>Student has passed the unit following a Further Assessment.</p> <p>PX will replace the previously recorded X and the mark will remain the same as that originally recorded.</p>
FX	0-99	Fail after Further Assessment	<p>Student has failed the unit following Further Assessment.</p> <p>FX will replace the previously recorded X and the percentage mark will remain the same as that originally recorded.</p>
F-IN	0-99	Fail – Incomplete/insufficient Assessment	May be used as an alternative to Fail at the discretion of the Board of Examiners where a student has not completed or submitted all required assessable work for the unit.
ANN	0-99	Result Annulled due to Academic Misconduct	Student has been found guilty of academic misconduct and a penalty of an ANN grade has been imposed.

INDICATOR	DESCRIPTION
WD	<p>Withdrawal</p> <p>A withdrawal from a unit after a census date may be recorded on the Academic Transcript as “WD”. The WD will remain on the Academic Transcript irrespective of whether a fee refund or remission of debt is approved.</p>



Attendance requirements

It is your responsibility as a student to attend all classes. Failure to attend the correct classes will result in your attendance not being recorded for that week.

Facial Recognition Attendance System

Curtin Singapore adopts a contactless facial recognition technology where facial features are scanned and captured by the facial recognition terminal. The data captured are then downloaded and managed by the Student Attendance System (SAS) to generate attendance record.

Student's attendance guidelines

Students are expected to

- arrive on time for each lesson;
- remain throughout the session for each lesson; and
- scan in using the facial recognition terminal at the beginning and the end of each lesson

Attendance requirement

All students

Students are required to maintain a minimum 75% attendance for each enrolled unit. Students who fail to obtain the minimum attendance requirement will not be eligible to sit for the final examination or receive grades for the final assessment, regardless of previous work submitted.

International students

In addition to the requirements above, international students must achieve a minimum monthly attendance requirement of above 90%. Curtin Singapore shall inform Immigration and Checkpoint Authority (ICA) when an international student's attendance is 90% or below, or has failed to attend classes for a continuous period of 7 days or more. This may lead to cancellation of the Student's Pass.

Attendance regulations continued

Student Engagement Program (SEP)

An international student holding a Singapore Student's Pass is required to be on campus for a minimum of 3 hours per day from Monday to Friday (except on public holidays or during non-teaching weeks, including study review and exam weeks).

Students must register their attendance on campus in the following circumstances:

- if a student does not have a class scheduled on a particular day, he/she is expected to fulfil 3 consecutive hours on campus at any given time between 9am to 6pm (For example, student has 3 hours class every Monday to Thursday but none on Friday, the student must be on campus for 3 hours, at any time between 9am to 6pm every Friday undertaking Student Engagement Program (SEP))
- if a student's class is run for less than 3 hours on a particular day (For example, student has a 1 hour tutorial class every Monday, student must continue to be on campus undertaking Student Engagement Program (SEP) to complete the remaining 2 hours in order to meet the 3-hour per day requirement)
- If there is an overlap between the period where the student completes the Student Engagement Program (SEP) and the academic class, the attendance for SEP will be marked as absent.

Students may register their attendance for SEP onto Facial Recognition Terminal located at:

- Level 2 Library
- Level 3 UniHub
- Level 4 Student Connect

By scanning in and out of the terminal, students' attendance are captured and monitored.

Please note that SEP is compulsory for all international students. The SEP schedule for each international student is determined and pre-enrolled every study period. Students are able to check on Axis on the last working day before the commencement of the study period to determine which days they are required to attend the SEP.

Attendance will be monitored and will form part of ICA's 90% attendance requirement. Warning letters will be issued to students who fail to meet this attendance percentage.

Absence Justification (AJ)

When a student is absent from class due to valid reasons, for example medical conditions, he/she is required to submit an AJ online via SAS Website at this link: <http://sas.curtin.edu.sg>

If you have a medical certificate issued by a registered medical practitioner in Singapore, it must be attached in the AJ request before the AJ can be approved.

Please be advised if you have any assignments or examinations due, an approved AJ will not automatically extend or defer these dates.

Curtin Singapore reserves the right at its sole discretion to reject absence reasons that are invalid or non-justifiable.

In Singapore, it is a legal offence to present forged documents to support reasons for absence. Under Section 468 of the Penal Code, offenders may face up to 10 years imprisonment, or fined, or both.

Appeals information



Academic status appeals

Students terminated from a course due to failure to achieve satisfactory course progress, have a right of appeal against that decision.

The Request for Review of Academic Status form must be submitted within 20 working days commencing from the date of the Official Communication Channel notification, advising you of your course termination. Appeals can be submitted via email to progressions@curtin.edu.au

All appeals must be accompanied by appropriate documentation. Failure to provide documentation may result in the appeal being rejected.

The outcome of the appeal will be communicated to the student within 10 working days of the lodgement of the appeal, via Official Communication Channel.

Assessment appeals

Assessment task

Step 1 – Review of assessment

Any student who feels the mark awarded for an assessment task is unfair or incorrect should in the first instance raise their concern with a Student and Academic Services Officer or send an email to assessments@curtin.edu.sg.

A session will be scheduled with the lecturer to review the assessment task.

Step 2 – Formal assessment appeal

If after going through this process, the student is still dissatisfied with the mark awarded, the student may lodge a formal appeal.

Formal Appeal Against Assessment must be lodged and completed via this link: students.connect.curtin.edu.au/app/appeal_against_assessment. The appeal must be lodged within 10 working days of the date the mark for the assessment task was notified to the student.

Appeals information continued

Final results

Step 1 – Review of assessment

Any student who feels that the final result is unfair or incorrect should in the first instance, raise their concern with a Student and Academic Services Officer or send an email to assessments@curtin.edu.sg. A review session will be arranged.



Step 2 – Formal assessment appeal

If after going through this process, the student is still dissatisfied, the student may lodge a formal appeal online the Formal Appeal Against Assessment form at this link: students.connect.curtin.edu.au/app/appeal_against_assessment.

Student lodging a formal assessment appeal must demonstrate the grounds on which to prove they were unfairly assessed.

The appeal must be lodged within 10 working days of the publication of the final results.

Curtin University will determine an outcome within 10 working days of the receipt of the formal appeal. The decision of the University is final.

Student support services



Curtin Singapore provides student support services to students from the day they join Curtin Singapore to the day they graduate. Services provided include:

Career Consultation services

Career Consultation services provide advice on avenues for a student to identify suitable career choices as well as guides through the job search process. Mock interviews provide you with an opportunity to apply and test your interview-answering skills in a real-world setting. This process will closely mirror what you might expect to undergo in a real interview, and participants will be provided with feedback on all areas of their interview performance, which includes first impressions, non-verbal communication, and ability to handle challenging interview questions, among others.

Industry engagement

Undergraduate and postgraduate students can benefit from engagement with professionals from the industry who act as mentors. You will be able to gain knowledge, skills and experience, and advice through various modes of guidance from the mentors.

Talks are regularly organised to provide a platform for students to hear from industry practitioners on the realities of working in a certain job role. These informal Q&A sessions allow students to gain an inside peek at the challenges and rewards that await them in different job roles.

Beyond the classroom workshop series

Workshops that complement your academic studies through a range of learning and development sessions that will up-skill and value-add your journey towards success and employability. Students can enrol in workshops on career planning, resume writing, interview skills, networking skills, or learn more academic skills such as assignment skills, study skills, digital skills, and referencing to expand knowledge or support your learning.

Student support services continued

Employment opportunities

Job openings with partnering employers are available on our internal job portal Curtin Global Careers at <https://globalcareers.curtin.edu.au/> Book an appointment with a Student Experience and Engagement Manager through SEE@curtin.edu.sg

Student Connect

One-stop enquiry and help services

Student Connect provides administrative support to both students and staff. It is the first point of contact for all day-to-day administrative matters which may include but are not limited to:

- application for letter requests
- Student's Pass queries
- examination, appeal and academic matters
- graduation matters
- loan of games
- lost & found enquiry services

Student Connect operates from Monday to Friday between 8.30 am and 6.00 pm (except public holidays). For any enquiries, you can email us at studentconnect@curtin.edu.sg.

Lost and found items

Students are advised to exercise extra care of their personal belongings in high traffic areas, such as the library and computer labs. Laptops, mobile phones, wallets, USB thumbdrives, Student ID Cards and other valuable items should not be left unattended at all times.

If you have lost or found any items on campus, please report the matter to Student Connect during office hours.

Accommodation

Curtin Singapore has a dedicated team that assists students in choosing their accommodation options by providing advice on the best category that would match their preferences. The accommodation team also works with various providers (housing owners, hostel operators, licensed property agents) to ease up the students' housing search.

Curtin Singapore's accommodation assistance is not mandated to students. It is an extended service to offer students information and guidance to help them find accommodation options best suited to them. Students are at liberty to search for their accommodation through their own network.

Student support services continued

Curtin Singapore Student Committee (STUCO)

STUCO provides various avenues of engagement for Curtin Singapore's students and promotes a vibrant campus life. Supported by Curtin Singapore, monthly events are organised to cater to a wide range of interests, such as sports, arts, and community outreach programs.

Students who would like to be a part of the STUCO may register their interest via email at SEE@curtin.edu.sg. Students are selected based on comprehensive recruitment criteria and panel interviews.

Student Clubs

Curtin Singapore has a list of established student groups and clubs catering to a wide selection of interests in the areas of sports, arts, and community service programs. Club recruitment drives are held at the start of every study period for students to register to be members of the clubs. Recruitment is open all year long, a range of events and activities are organised, and regular meetings and get-togethers are also held among clubs. Refer to the Curtin Singapore website for information about student clubs and fun-filled activities at <https://students.curtin.edu.sg/curtin-experience/student-clubs/>.

Please contact us at SEE@curtin.edu.sg if you would like to be a member of any of these clubs.

Games

Loan of games

Curtin Singapore has games for loan. These include pool set, board games, card games and many more. Approach any staff member at Student Connect for loan of games. All you need to do is to sign out with your Student ID Card in exchange for the games.

Kindly note that all games loaned to students, remain the property of Curtin Singapore. Any lost or damaged item is replaceable or chargeable to the relevant student.

Student support services continued

Counselling and disability services

Counselling services

Counselling is available to all Curtin Singapore students. It is a voluntary and confidential avenue for students to discuss issues of concern that may not be easily communicated with family or friends.

Students may seek advice on personal and cross-cultural issues, study and learning strategies, stress management techniques and other non-academic matters.

Disability/pastoral program

If you have a medical condition, physical or learning disability, meet with our counsellor to discuss your needs so that we may be able to put in place an access plan to assist you during your studies.

For these services, students may approach Student Connect, Monday-Friday, 8.30 am to 6.00 pm or email at counselling@curtin.edu.sg to set up an appointment with the counsellor. Appointment schedule is every Tuesday and Thursday, 2.00 pm to 5.00 pm (except during term breaks and on public holidays).



Student administration



Fee Protection Scheme (FPS)

Curtin Singapore adopts the Fee Protection Scheme (FPS) to provide full protection of all tuition fees paid by the students. All students who are enrolled with Curtin Singapore will have to purchase the FPS under FPS Group Insurance. Students are advised to check all issued receipts to ensure accuracy of information printed and tuition fees paid. Students may submit a request for the Certificate of Insurance to finance@curtin.edu.sg.

With reference to the Fee Protection Scheme policy:

Insured events

The benefits under this insurance are payable upon the occurrence of any of the following events:

- Insolvency or Regulatory Closure of PEI
- PEI's failure to pay awarded sum by Singapore Courts to the Student
- Accidental Death or Permanent Total Disablement to the Student caused solely and directly by accidental, visible and violent means (excluding any sickness, disease or medical disorder)

Limits of indemnity

Insured Event 1 and/or 2: Insured Tuition Fees for any one event and in the aggregate

Insured Event 3: \$10,000 for any one event and in the aggregate

Claims

Please notify Howden Insurance Brokers (S.) Pte Ltd as soon as an Insured Event occurs or may occur. All claims shall be made on prescribed forms and submitted to Lonpac Insurance Bhd as soon as reasonably possible together with all supporting documents and information. Any information required by Lonpac Insurance Bhd for assessing the claim shall be furnished by the student at his/her expense.

Administration Agent:

Howden Insurance Brokers (S.) Pte Limited
Tel: 6856 8328

Email: customerservice_aegis@howdengroup.com

Website: www.howdengroup.com

Student administration continued

Medical insurance

Curtin Singapore confirms and undertakes that it has in place a medical insurance scheme for all its students as required by CPE under EduTrust Certification Scheme. This medical insurance scheme shall minimally provide for an annual coverage limit of not less than S\$30,000 per student, at least B1 ward in government and restructured hospitals and 24 hours coverage in Singapore and overseas (if student is involved in school-related activities) throughout the course duration, and the student is encouraged to seek advice on whether more comprehensive insurance cover is required or desired.

Curtin Singapore's appointed medical insurance provider is Income Insurance Limited.

A Singapore citizen, permanent resident or a non-Student's Pass international student who is protected by his/her own medical insurance coverage in Singapore can opt out from the medical insurance scheme arranged by Curtin Singapore.

Group Hospital and Surgical Insurance for Covid-19

Curtin Singapore is committed to ensure safety and well-being for our students. As part of our ongoing support services to all international students, Curtin Singapore has in place a medical insurance scheme that covers hospitalisation costs due to COVID-19 infections only.

Medical Insurance Scheme Benefits Schedule

The Medical Insurance Scheme Benefits Schedule provides information on the full coverage and/or exclusions of the medical insurance scheme. You may obtain the Medical Insurance Scheme Benefits Schedule at <https://curtin.edu.sg/curtin-university/policy-governance/medical-insurance/>

Medical Insurance Claim submission

Students covered under the medical insurance scheme are eligible to apply for hospitalization claims subject to the following conditions:

- they are currently enrolled students of Curtin Singapore from the date of hospital admission
- no double claims to other insurance companies, whether locally or overseas are made by the applicant
- students may submit either of the following medical insurance claim forms, depending on the hospital category the student is admitted to:
 - **claim form only**—If the student is admitted to a Singapore government or government restructured hospital
 - **combined PEI claim form**—If the student is admitted to a private hospital in Singapore or any hospital overseas. The Medical Certification of Treatment attached onto the PEI Claim Form is required to be completed and endorsed by the student's attending physician

Students must attach all original invoices, receipts and medical reports along with the claim form. All completed claims are to be emailed to academic@curtin.edu.sg

Student administration continued

Student's Pass information for international students

International students who wish to pursue full time studies in Singapore must apply for a Student's Pass.

All Student's Pass holders are required to abide and comply by Immigration and Checkpoints Authority (ICA) regulations at all times. The penalties for breaching the rules and regulations of ICA are severe and may result in the termination of the Student's Pass. The terms and conditions of Student's Pass can be found in the In-Principle Approval (IPA) letter and on this link: https://www.ica.gov.sg/docs/default-source/ica/files/docs/terms_-_conditions_stp.pdf

Some of these regulations include:

- students are only permitted to attend the course at the school as stated in the In-Principle Approval (IPA) letter;
- students must meet a minimum attendance requirement of 90% per month and not be absent from a class for a continuous period of 7 days without valid reason. Curtin Singapore will report to ICA any student who breaches this regulation. (For further clarification, please refer to the Attendance Section of the Handbook);
- students must understand that the Student's Pass will be cancelled by the Controller of Immigration if they fail to remain or cease to be retained as a student of Curtin Singapore;
- students holding a Student's Pass are strictly not allowed to engage in any form of paid employment or in any business, profession or occupation in Singapore during the validity of your Student's Pass;

- students shall not smoke, administer to themselves, consume or be in any way engaged in the trafficking of any controlled drug as defined in the Misuse of Drug Act or any written law in force relating to the control of dangerous or harmful drugs;
- students shall not take part in any political or other related activities during their stay in Singapore;
- students shall not contravene any laws or any statutory modification or re-enactment in force in Singapore during their stay;
- students are not permitted to remain in Singapore without a valid stay. This will result in overstaying which is punishable by law.

Student's Pass renewal

Students are required to complete the Student's Pass application at least 4 weeks before the expiry of the Student's Pass.

It is the student's responsibility to ensure that the Student's Pass is renewed on time. Curtin Singapore will not be responsible if the Student's Pass expires or is rejected by ICA due to late renewal.

Student administration continued

Student's Pass cancellation

International students are required to surrender their Student's Pass within 7 days from the date of cessation or termination of their course. A Notification for Cancellation of Student's Pass will be emailed to you, stating the short duration you are permitted to stay in Singapore following the cancellation.

Curtin Singapore will also inform ICA to cancel the Student's Pass when a student:

- has been absent from class for a continuous period of 7 days
- attendance is below 90%
- has no enrolment in a particular trimester

Loss of Student's Pass

International students who have lost their Student's Pass are required to apply for a replacement within 7 days from the date of loss or date of damage/defacement. A police report is required to be lodged at a Singapore police station and should thereafter be submitted to the Student Central along with other supporting documents.

The following documents are required to apply for replacement of Student's Pass:

- one recent passport-sized photo (taken within the last 3 months)
- valid travel document (with a validity period of at least 6 months)
- a letter from Curtin Singapore stating that the student is currently a registered student
- a Statutory Declaration signed by the holder or a police report (original copy)

- students in all circumstances are to acknowledge a copy of the Terms & Conditions of Student's Pass (STP).

Update of personal particulars

All students are required to inform Curtin Singapore of any changes to their residential address in Singapore, contact numbers and residency status within 7 working days. It is important that personal details are updated for the institution's record as such information may be required by Singapore Government. International students in particular are required to update their particulars within 7 working days upon arrival in Singapore. Students are requested to approach Student Central and advise them of these changes.

Singapore laws and regulations

All Curtin Singapore students, whether local or international, must take note of Singapore Laws and Regulations. Please refer the website of the Attorney General's Chambers' Singapore Statutes Online at sso.agc.gov.sg/ for the full list.

Use of Student ID card

Your Student ID Card serves as your identification on campus. The Card is issued by Curtin Singapore to its registered students. It entitles a student to access the library, photocopier and other campus facilities. This Card is non-transferable and must be produced as a proof of identity during Examinations or to any Curtin staff as and when required. Please ensure your Student ID Card details are correct at all times.

Please approach Student Central for all Student ID Card related matters.

Confidentiality and privacy policy



Curtin Singapore is committed to maintaining the confidentiality of students' personal information and pledges not to divulge any of the student's personal information to any third party without the prior written consent of the student.

IT privacy and confidentiality

- Monitoring of electronic communication systems is limited to duly authorised investigations by the IT Manager or delegated personnel.
- Curtin Singapore's IT Manager is authorised to monitor and log details of e-mail and internet usage of students to monitor compliance with Curtin Singapore policies and legal requirements.
- Curtin Singapore's senior management team or delegates have authority to access these logs with respect to students within their area of responsibility.
- Curtin Singapore abides by legislative and regulatory requirements to ensure the privacy and confidentiality of student information. Curtin Singapore will use its best efforts not to disclose the contents of any e-mails or browsing logs to any third party, unless required by law to do so, or with the consent of the student.
- In accordance with the Personal Data Protection Act 2012 (PDPA), Curtin Singapore recognises the rights of the students to protect their data and the needs of Curtin Singapore to collect them for legitimate and reasonable purposes. In this context, Curtin Singapore will collect, use or disclose personal data when:
 - a) the student have the knowledge and gave a consent (with some exceptions),
 - b) Curtin Singapore have stated the purpose in an appropriate manner and must be within reason in the given circumstance.



Standard code of conduct

Student's responsibility

As a student of Curtin Singapore, you are part of the Curtin community and as such, have certain responsibilities. You will be required to comply with all relevant laws, University Statutes, rules, by-laws, policies and procedures. You must be aware of information on course requirements and academic progress and recognise that cheating, plagiarism, fabrication or falsification of data and the improper use of copyright material are not acceptable.

You will participate constructively within Curtin Singapore's learning environment and act at all times honestly and responsibly in relation to academic matters and the use of campus facilities. You are expected to behave respectfully, embracing the diversity of both Curtin staff and students with a sense of consideration of their rights and responsibilities.

Alcohol and illegal drugs are not allowed on campus premises. The possession of illegal drugs is a criminal offence and any student caught in possession of illegal drugs on campus premises will be reported to the police.

Irresponsible behaviour on the part of the student may lead to the student being:

- asked to leave a room or any campus premises by an authorised Curtin Singapore staff member;
- reported to the relevant Government department;
- suspended from activities for a period of time determined by the Pro Vice-Chancellor and President or Director of Academic Services; or
- expelled from Curtin Singapore.

Standard code of conduct continued

Library code of conduct

Curtin Singapore aims to provide a safe and pleasant place for students to study. The library code of conduct is necessary in order to protect the rights of individuals using the library and preserving library materials and facilities from harm and damage.

Conduct of library users includes:

- Behaviour or language that is disruptive, abusive, insulting, harassing or threatening to library users or staff is not permitted.
- To maintain a quiet study atmosphere in the library, only whispering or soft talking is permitted.
- Food, beverages, and smoking are not permitted in the library.
- Academic work in the library is the priority.
- Mutilation and theft of library materials are serious offences. Offenders will be penalised and payment must be made to cover all damages.
- Copyright rules should be strictly observed by all library users when making copies of library materials.

- Reservation of seats in the library is not permitted.
- Personal belongings should not be left unattended. The library will not be responsible for any loss or damages of personal belongings. Books and other materials left unattended may be removed by library staff and taken to Library Counter.
- The library has Closed Circuit TVs to safeguard library materials and property.
- Users should be aware of Curtin Singapore computer use policy.

Violations of the library code of conduct may result in temporary removal or permanent ban of the violator from the library at the discretion of the Librarian. Library staff may require a user to leave the library for noncompliance so as to ensure the safety of others.

Standard code of conduct continued

Academic

Please refer to Academic Misconduct section contained in this handbook located [here](#).

Harassment

Curtin Singapore should be a pleasant environment for both students and staff to encourage the effectiveness of work and learning. Harassment consists of unwelcome, offensive, abusive, belittling, or threatening behaviour directed at staff members and students. All forms of harassment are considered unlawful. Curtin Singapore will consider disciplinary action in cases of harassment. Students subject to any form of harassment by any individual or group of individuals are advised to report the matter in confidence to the Safer Community Team on email at safer@curtin.edu.sg.

Anti-discrimination

Curtin Singapore does not welcome discrimination on the basis of sex, race, religion or disability. Any student who feels they have been discriminated against on these grounds should contact Student Connect.

As a student at Curtin Singapore you are subject to the provisions of the Republic of Singapore.

Copyright

Copyright Act (Chapter 63) 2006 and are also obliged to abide by the University's policies and requirements on copyright. Students who deliberately disregard policy and copyright requirements will be liable to disciplinary action and may risk prosecution by individual copyright owners.

The possession and use of unauthorised copies of study materials is an offence under Singapore law. Students are not permitted to bring unauthorised copies of textbooks or study materials onto the campus.

Unauthorised copies of textbooks are not permitted in campus. Any student found in possession of unauthorised copies will have the copy removed and may be liable for prosecution.

Eating or drinking

Eating or drinking in any learning spaces, Library, common study areas or computer labs is prohibited. This will help to keep these areas clean and comfortable for all students. Please ensure that rubbish is put in the bins provided.

Unauthorised audio and video recording

No unauthorised recording of audio or video of all activities, lectures and tutorials is allowed.

Mobile phones

Mobile phones must be switched off or be kept in silent mode at all times during class or while you are in the Library.

Standard code of conduct continued

Smoking

Curtin Singapore is a smoke-free campus.

Alcohol

Alcohol is not allowed to be sold or consumed on campus.

Gambling

Gambling is not allowed on campus.

Penalties

Refusal of enrolment

Where evidence of any criminal conviction, misbehaviour, or incapacity on the part of a person/student is discovered and it is agreed that the safety or ability of staff/students to pursue their lawful activities within Curtin Singapore would be prejudiced if that particular person were enrolled or allowed to continue as a student of Curtin Singapore, Curtin Singapore may:

- refuse to enrol or
- cancel the enrolment.

Cancellation of enrolment

Curtin Singapore may cancel the enrolment of any student:

- who has gained admission to Curtin Singapore by misrepresentation, by falsification of documents or by other fraudulent means, or
- who has failed to fulfil the normal requirements for admission or enrolment, or
- for any act of grave misconduct associated with the academic program and their delivery of Curtin Singapore.



Campus resources and facilities



Library

The Curtin Singapore Library provides services for all staff and students of Curtin Singapore. It holds a collection of textbooks and reference books that support the teaching and learning needs at Curtin Singapore.

Opening hours

Library counter services will be closed 15 minutes before the library closes. Photocopiers and computers will be turned off 5 minutes prior to closing.

STUDY PERIOD	
Monday – Friday	8.30am – 7.30pm
Saturday	8.30am – 1.30pm
Sunday and public holidays	CLOSED

STUDY FREE WEEK(S) PERIOD IN (TRIMESTER 1A AND SEMESTER 1)	
Monday – Friday	8.30am – 6.00pm
Saturday, Sunday and public holiday	CLOSED

Note: Opening hours are subject to change and notices of the changes will be displayed at the entrance doors.

Enquiries

Library staff at the library counter are available to assist students at all times, including how to use the library services, electronic resources or help with finding information for their studies.

Collection

Full bibliographical records of the resources are accessible through Curtin Singapore Library catalogue at <https://library.curtin.edu.sg>

Loans services

Current students must present a Student ID Card to borrow books or use library facilities and services.

All Library textbooks are not to be taken into any test venues for all assessments, such as quizzes, presentations and tests. During examination period, all textbooks on loan will be strictly used in the library only.

Campus resources and facilities continued

Loan rules

- Your Student ID Card is your library card. You must present your Student ID Card every time you wish to borrow any library items. You must check that all library items in your possession have been properly issued to you before leaving the library.
- You are responsible for all items charged out on your Student ID Card.
- You must return or renew library items when due.
- You will be held responsible for any library items found damaged. You must check for and report any damages before borrowing the item.
- Library items lost or damaged must be paid or replaced by users.
- You must report lost library items at the Library Counter immediately. You are liable to pay overdue fines (where applicable), calculated from the date due to the date when the lost items are reported, if subsequently found, to the date the book is returned. The cost of replacement for library items lost, inclusive of fines and surcharge, is not refundable.
- Any change of personal particulars must be reported to Student Central immediately.

BORROWER	MAXIMUM ITEM FROM COLLECTION	LOAN DURATION	RENEWAL LIMIT	OVERDUE FINES
Students	1 Student Textbook Collection 4 General Collection	2 hours 2 weeks	1 1	SGD0.50 per hour SGD0.50 per day
Teaching Staff	5 Desk Copy Collection 1 Student Textbook Collection 1 General Collection	1 study period 2 hours 2 weeks	1 1 1	

My library account

You can check your library account at Curtin Singapore Library catalogue at <https://library.curtin.edu.sg>. It gives you access to all of your borrower information including overdue loans, reservation, loan history and more.

Returns

You may return borrowed items at the Library Counter during opening hours. When the library is closed, you can use the Book Drop which is located next to the Library entrance.

Renewals

Library members may renew items borrowed at the Library Counter or online at Curtin Singapore library catalogue. Renewal is denied if:

- item is reserved by another library member
- library member has outstanding fines
- library member has exceeded the renewal limit for the item category

Recalls

All items are subject to recall. They are to be returned immediately, if needed for course reserve. A borrower who fails to respond promptly to urgent recall requests will be liable for fines.

Campus resources and facilities continued

Reservations

Library members may place an online reservation for any item that is out on loan at Curtin Singapore Library catalogue at <https://library.curtin.edu.sg>.

Member will be informed of its availability via email. All reservations will be cancelled if the items are not collected by the specified date in the email notification. Reservations must be collected in person at the Library Counter.

Reminder and overdue notices

OVERDUE NOTIFICATION	PERIOD OF NOTIFICATION SENT
Reminder of Item Coming Due	3 days before due date
First Overdue Notice	7 days after due date
Second Overdue Notice	14 days after due date
Third Overdue Notice	21 days after due date

You will receive library reminder and overdue notifications by email. It is your responsibility to keep track of the due dates of the loans by your student email and library account via My Portal at Curtin Singapore library catalogue regularly. Non-receipt of reminder is not a valid reason for waiver of fines. If the item(s) is not returned by 28 days from the date due, it is considered lost and you have to pay for the replacement cost of the item(s).

Fines for overdue library items

Library members can check whether they have accumulated any outstanding fines through Curtin Singapore library catalogue. Overdue fines will not be computed for Library closure hours.

Items that are returned by 28 days from the date due are considered lost. Please refer to 'Lost or damaged items' below for more details.

Borrowers with overdue items or unpaid fines will have their borrowing privileges suspended and a sanction will be placed on their student record.

Lost items

Library members are responsible for the items which are borrowed under their library accounts. The loss of a library item must be reported immediately.

Library members have to pay:

- the price when the item was purchased + GST
- a processing fee of SGD20 + GST per item
- overdue fines (if any) computed from due date to date when the item is reported lost

Library members may replace the item reported lost with a new copy within a month from the date of the item is reported lost. The replacement copy must be acceptable to the Library. The processing fee of SGD20 + GST is still payable for each item.

The cost of replacement for library items lost, inclusive of processing fee and overdue fines, is not refundable.

Campus resources and facilities continued

Damaged items

Borrowers will have to pay repair charges for damaged done to the item borrowed. Borrowers are responsible for the processing fee of SGD20.00 + GST as well. If the item is damaged beyond repair, the replacement charges will be levied as a lost item.

Printing and photocopying services

Three network printers cum photocopiers are located at the library for you to use during library operating hours. Payment is made using your Student ID Card.

You can top up (place credit) your Curtin Singapore Student ID Card at the Library Counter. Minimum and maximum value to top up are SGD2 and SGD20 respectively, which is non-refundable.

Balance credits are cleared (non-refundable) upon finishing the last trimester or semester of your course.

The charges for printing and photocopying services are as follows:

PRINTING AND PHOTOCOPYING SERVICE	CHARGES
A4 in Black & White	SGD0.10 per page
A4 in Colour	SGD1.00 per page
A3 in Black & White	SGD0.20 per page
A3 in Colour	SGD1.50 per page

Singapore Copyright Act

You are required to observe the Singapore Copyright Act when making photocopies. Photocopying and reproducing from books, periodicals (journals), etc. constitute infringements of copyright unless the acts fall within the exceptions.

There is a fair dealing exception for:

- ONE copy of an article from a periodical,
- ONE copy of not more than 10 per cent of the total number of pages of published work (if work contains more than 10 pages)
- ONE chapter of the published work even if one chapter exceeds 10 per cent of the total number of pages

If your copying exceed the limits allowed under the Copyright Act, the University will not be liable for any infringement of copyright action which may be taken against you. In this event, you will be personally liable.

Book recommendations for purchase

Staff and students are welcome to recommend materials for purchase to meet the teaching, learning and research needs of the University. You may email us at library@curtin.edu.sg

Campus resources and facilities continued

Electronic Resources

Students may access the Electronic Resources remotely from Curtin University Library website at <https://library.curtin.edu.au> Students need to use Curtin ID number and password to access the E-resources.

The e-Resources consist of:

- past examination papers,
- LibGuides,
- e-Reserve,
- ebooks,
- referencing guide,
- journals,
- database,
- and espace.

Library account

You can check your library account via My Portal at Curtin Singapore Library catalogue at <https://library.curtin.edu.sg> to:

- check the number of items borrowed.
- check fines owed to the Library.
- check the status of reservations.
- renew loans.
- cancel reservations.
- change your library password.

Procedure

1. Go to Curtin Singapore Library catalogue at <https://library.curtin.edu.sg>
2. On the main page, click Go.
3. On the top right corner, click Login
4. Type your Username: Curtin ID (eg. 12345678)
5. Password: student (this is your initial password, remember to change your password via Curtin Singapore Library catalogue)
6. Click Login

You are now logged in and can check your current loans, overdue items, reserved items, and loan history. You can also change your Library password to something easier to remember.

Don't forget to log out after checking your library account!

If you have any problems with your account, see the library staff for assistance.

Campus resources and facilities continued

Procedure to change Curtin Singapore Library password

1. Go to Curtin Singapore Library catalogue at <https://library.curtin.edu.sg>
2. On the main page, click Go.
3. On the top right corner, click Login
4. Type your Username: Curtin ID (eg. 12345678)
5. Password: student (this is your initial password, remember to change your password)
6. Click Login
7. On the left panel, click My Portal. Under the drop down list, choose Details.
8. Click on the pencil icon at the end of Change Password option.
9. Type your current password: student
10. Enter your New password and re-enter to confirm password.
11. Click Save to save your new password.

Important notes

- Username: Your Student ID number is your username
- Password: student – a generic password
- Please note that you may change the password via the Curtin Singapore Library catalogue
- Inability to access Curtin Singapore Library catalogue to renew your loan is not a valid reason for waiver of overdue fines.

Online tutorials

The Curtin University Library website at www.curtin.edu.au/library has tutorials on a range of research and information skills topics.

Learning workshops

The library aims to promote the use of information and information sources effectively, and offers various workshops to support students and lecturers in their academic activities. These workshops assist students and lecturers in identifying and retrieving information both in print and electronic formats for their study, research and teaching purposes. These include series of workshop such as database searching techniques, finding scholarly journal articles, referencing and citation for undergraduate and postgraduate students. Please visit www.curtin.edu.sg to learn more about the library workshops and discover how they will benefit your academic journey.

Alternatively, please email to library@curtin.edu.sg to enquire more about the workshops.



Campus resources and facilities continued

Group Discussion (GD) and Single Study (S) Pods

7 GD Pods and 4 S Pods are available for group and single student use respectively. Each group or student can book the Pods for 1 hour per day. The minimum number of students in GD Pods is 2 and the maximum is 4 at any time. Extension of the usage of Pod is permitted for another hour based on room availability.

Bookings of the Pods may be made at the Library Counter using your Student ID card, or by email library@curtin.edu.sg. If booking is made via email, you will receive an email confirmation.

Computers

Computers in the Library are available for use for word processing, Internet browsing, emailing and other general software applications.

You can login to the computers using your Student ID number and AXIS password.



Campus resources and facilities continued

IT SUPPORT

For all IT support requests, please email itsupport@curtin.edu.sg or contact IT by calling the IT hotline on (65) 6593 8061 during the following hours:

- Study Period 8.30 am to 6.00 pm from Monday to Friday (excluding public holidays)
- Non Study Period 8.30 am to 6.00 pm from Monday to Friday (excluding public holidays)

Internet usage

Wireless internet access is available on campus.

Before you are able to connect to Curtin Singapore Wi-Fi for the first time, you are required to login to AXIS or the campus computers in the library. You will not be required to do this step for subsequent access, unless you request your password to be reset.

Your username will be your 8-digit Curtin Singapore student ID number. When you first log into a computer, your password will be your date of birth in the format YYYYMMDD.

For example if your date of birth is 2nd June 1981, you will log in as follows:

Username: 14044115

Password: 19810602

To connect to Curtin Singapore Wi-Fi, the log in details will be

Username: 14044115@learning.curtin.edu.sg

Password: 19810602

Students will be required to change their password after they log on for the first time.

Students are not allowed to connect personal laptops and notebooks to the Ethernet/LAN cable. If a laptop is found connected to the Ethernet/LAN cable, IT will ban the laptop from connecting to both the wireless and the non-wireless networks.

If you have any questions pertaining to your access and internet connection on campus, do not hesitate to email

itsupport@curtin.edu.sg

Appropriate use of internet and email

IT facilities are provided by Curtin Singapore to students as tools to assist in their learning. These systems, including all equipment and contents (however stored), are the properties of Curtin Singapore.

Misuse of electronic communication systems may result in disciplinary action. The form and severity of such action will depend on the circumstances, but may include monitoring of use, loss of access, suspension or expulsion from Curtin Singapore.

The following are examples of prohibited use:

- accessing, storing or communicating obscene or offensive materials, for example any inflammatory, pornographic or violent material or any message, joke or form which violates any law or harassment such as racial or sexual harassment or creates an intimidating or hostile study environment;
- using Curtin Singapore's communications system for personal commercial benefit, including setting up or running a business;
- accessing, storing or communicating confidential Curtin Singapore material or information;
- accessing, storing or communicating material in a way that violates Curtin Singapore's or any other person's copyright or

Campus resources and facilities continued

other intellectual property rights;

- communicating personal views on social, political, religious or other matters for purposes unrelated to study with Curtin Singapore;
- transmitting of chain letters or petitions, spamming etc;
- communicating any information or material that could damage the reputation of Curtin Singapore or any other person, including information or material which degrades or criticises the motives or ethics of any person;
- communicating anonymously or under any name other than your own;
- wagering or betting;
- accessing or attempting to access another person's website or system without their permission.

Curtin Singapore is not responsible for technical problems associated with any web-based E-mail services.

Curtin Student UniHub

Curtin Student UniHub is located on Level 3 and is opened from Monday to Friday between 8:30 am and 8:00 pm, and on Saturday between 8:30 am and 1:30 pm. There are food and drinks vending machines for students and staff use, and microwaves are also available to heat up food.

Curtin Student UniHub is also a great place to network and interact with students. Students can enjoy pool games and other activities.

Student UniHub

The UniHub is located at level 3 and is opened on Monday to Friday between 8am - 8pm

First aid

Certified first aid officers are available on campus. In the event that you are unwell or injured on campus, please approach Student Connect or Library for assistance

Gym

A gym is available at Curtin Singapore. Located on Level 2, the gym is open to all current students free of charge. A number of fitness equipment could be found and utilised at the gym. The gym's operating hours during teaching period is between 8.30 am and 7.30 pm on weekdays. It is closed on Saturdays, Sundays and public holidays.

Parking

Parking is available at the Alpha building for students or guests visiting the campus. Enjoy a 10-minute grace period for pick-up/drop-off. Full parking charge will apply for vehicles in the car park beyond 10 minutes from the time of entry.

Financial information



Tuition fee

Students are responsible for ensuring that all tuition fees are paid by the due date. Payment made after the due date is subject to a late payment fee of \$160 plus a weekly late payment fee of \$100. Any enquiries about tuition fees should be addressed to the Finance Department via email at finance@curtin.edu.sg.

All fees are payable in Singapore dollars only.

Payment options

By mail

Cheque payable to Curtin Singapore

Postal Address: 10 Science Park Road, The Alpha, Science Park II,
Level 3 Unit 03-08, Singapore 117684

Please write your name and student ID number on the back of the cheque.

Before mailing the cheque, please email a copy of the front and back of the cheque to finance@curtin.edu.sg.

By overseas telegraphic transfer or local internet transfer

Account Name: Curtin Singapore

Name of Bank: Citibank N.A.

Bank Address: 8 Marina View, Asia Square Tower 1,
Singapore 018960

Account Number: 0850303029

Branch: Singapore

Bank Code: 7214

Branch Code: 001

Swift Code: CITISGSG

Please state your student ID number and registered name in the reference field and email a copy of the transfer application to finance@curtin.edu.sg.

Financial information continued

By PayNow

Student can enter the Unique Entity Number 2008084822RSGD or scan the QR code on the right using the mobile banking app.



Curtin Education Centre Pte Ltd is displayed as the recipient name. Please state your student ID number and registered name in the reference field and email a copy of the transfer application to finance@curtin.edu.sg so that we can identify your fees and allocate them to your account promptly. If your student ID number and registered student name are not stated in the reference field and proof of payment is not presented, the fund may be returned back to the sender within 7 days.

By Convera GlobalPay

International Student may also make their payments through Convera GlobalPay. This allows students to pay tuition fees in their local currency, quickly and conveniently. For more information on Convera GlobalPay for Students, visit <https://students.curtin.edu.sg/student-essentials/fees/payment-options/convera-globalpay-for-students>.

Please advise Curtin Singapore Finance Department immediately when the funds have been direct deposited into the bank account. Please ensure you keep the receipt and present it to Curtin Singapore Finance Department as proof of payment. If student ID number and registered name are not stated in the reference field and proof of payment is not presented, the fund may be returned back to the sender within 7 days. Tuition fee payments are only accepted based on the instalment amount stated in the Standard PEI-Student Contract. Tuition fees will be

based on the prevailing rates during the new contract period upon the expiry of the existing contract.

Issue of receipts

An official receipt is issued by Curtin Singapore for every payment (other than photocopying, ring binding and laminating charges) made by students. The receipt indicates the total amount paid with a detailed breakdown of what the payment is for. Student will receive the official receipt of each payment via email.

Request and payment for printing of official documents are to be made directly to Curtin University.

Over and undercharging policy

Curtin Singapore is committed to the avoidance of over or undercharging.

Detailed breakdown of course fees, including non-tuition fees are clearly defined in the Standard PEI-Student Contract and payment schedule.

Refund policy

Private Education Institution (PEI) refers to Curtin Singapore, for the purpose of the Refund Policy.

The refund policy is published on the Curtin Singapore website found on this link: <https://students.curtin.edu.sg/student-essentials/fees/refund-policy/>

Financial information continued

1.1 Notification and arrangement

PEI shall notify the Student within three (3) working days upon knowledge of any of the following:

- It does not commence the Course on the Course Commencement Date;
- It terminates the Course before the Course Commencement Date;
- It does not complete the Course by the Course Completion Date;
- It terminates the Course before the Course Completion Date;
- It has not ensured that the Student meets the course entry or matriculation requirement as set by the organisation stated in Schedule A of the Standard PEI-Student Contract within any stipulated timeline set by CPE; or
- The Student's Pass application is rejected by Immigration and Checkpoint Authority (ICA).

The Student should be informed in writing of alternative study arrangements (if any), and are obliged to pay for only services received e.g. the semester/term fees during which the student had participated in and benefitted from e-Learning. Any unconsumed Course Fees and Miscellaneous Fees already paid shall be refunded to the Student should the Student decide to withdraw, within seven (7) working days of the above notice.

1.2 Withdrawal for cause

Subject to Clause 1.8, the Student shall be entitled to immediately withdraw from the Course by giving written notice to the PEI of his/her intention to do so if the PEI is in breach of any of its obligations under the Student Contract or fails to perform its obligation(s) under the circumstances in Clause 1.1 (i) to (v).

1.3 Refunds for withdrawal for cause

For circumstances under Clause 1.1, the PEI shall, within seven (7) working days after notifying the Student, refund to the Student:

- The entire amount of the Course Fees; and
- The Miscellaneous Fees (if any).

The PEI shall also, as soon as practicable after receiving the Student's notice of withdrawal under Clause 1.2 (and in any event no later than seven (7) working days after receiving such notice) refund to the Student the amounts stated in this Clause 1.3.

1.4 Refunds for withdrawal without cause

Where the Student withdraws from the Course for any reason other than those set out in Clause 1.2 or Clause 1.8, the PEI shall, subject to Clause 1.9, as soon as practicable after receiving the Student's written notice of withdrawal (and in any event no more than seven (7) working days after receiving such notice) refund to the Student the following sums (less any applicable bank administrative charges properly paid/payable):

Financial information continued

% OF [THE AGGREGATE AMOUNT OF THE FEES PAID UNDER COURSE FEES AND MISCELLANEOUS FEES]	IF THE STUDENT'S WRITTEN NOTICE OF WITHDRAWAL IS RECEIVED
[95%]	More than [70] days before the Course Commencement Date
[90%]	Before, but not more than [70] days before the Course Commencement Date
[50%]	After, but not more than [28] days after the Course Commencement Date
[0]	More than [28] days after the Course Commencement Date

1.5 Cooling-off period

The PEI will provide the Student with a cooling-off period of seven (7) working days after the date that the Contract has been signed by both parties.

The Student will be refunded the highest percentage (stated in Clause 1.4) of the fees already paid if the Student submits a written notice of withdrawal to the PEI within the cooling-off period, regardless of whether the Student has started the course or not.

If the Student and the PEI cannot settle a dispute using the way arranged by the PEI, the Student and the PEI may refer the dispute to the CPE Mediation-Arbitration Scheme.

This Clause 1.5 takes precedence over the PEI's refund policy stated in Clause 1.4.

1.6 Deemed withdrawal

A Student who transfers from the Course to another course with the PEI shall, for the purposes of this Clause, be deemed to have withdrawn from the Course and the provisions of Clause 1.4 shall apply save as otherwise agreed between the PEI and the Student.

1.7 Change of course

Further to Clause 1.6, a fresh PEI-Student Contract under this format shall be executed between the PEI and the Student for any change of Course, whether with the same PEI or otherwise.

1.8 Force majeure

In the event that any party shall be rendered unable to carry out the whole or any part of its obligations under this Agreement for any reason beyond the control of that party, including but not limited to acts of God, force majeure, strikes, war, riot and any other causes of such nature, then the performance of the obligations hereunder of that party or all the parties as the case may be and as they are affected by such cause shall be excused during the continuance of any inability so caused, but such inability shall as far as possible be remedied with all reasonable despatch. For the avoidance of doubt, this Clause shall not apply to cases where:

- The PEI is declared to be insolvent and/or a winding-up order made or bankruptcy issued by the Singapore court against the PEI (or, any partner of the PEI if the PEI is a partnership); and
- The relevant authority(ies) issue(s) an order to cease and/or terminate the operations of the PEI, or the happening of anything of a similar nature under the laws of Singapore.

Financial information continued

1.9 No double claim

For the avoidance of doubt, if the Student and/or his/her parent/guardian receives any payment from the PEI or the Insurance Company pursuant to a provision of the Student Contract or the Master Insurance Agreement in respect of any matter or damage, then the Student and his/her parent/guardian shall not be entitled to claim against the PEI or the Insurance Company for the same payment in respect of the same matter or damage pursuant to any other provision of the Student Contract or the Master Insurance Agreement.

1.10 Jurisdiction

The parties hereby irrevocably agree that the courts of Singapore are to have jurisdiction to settle any disputes which may arise out of or in connection with the Student Contract which cannot be settled successfully through the Singapore Mediation Centre (SMC) or Singapore Institute of Arbitrators (SI Arb) and that, accordingly, any legal action arising out of or in connection with the Student Contract (“Proceedings”) may be brought in those courts and the parties irrevocably submit to the jurisdiction of those courts PROVIDED THAT nothing in this Clause shall limit the right of any party to take Proceedings in any other court of competent jurisdiction nor shall the taking of Proceedings in one or more jurisdictions preclude that party from taking Proceedings in any other jurisdiction, whether concurrently or not.

1.11 Withdrawal of a unit

Where a student withdraws from a unit before census date, no fee liability is incurred. Any fees paid in respect of the unit will be retained as credit towards the next study period. Should a student request a refund of the tuition fee associated with the withdrawn unit, the refund policy applies to the withdrawn unit.

1.12 Misconduct or fraudulent or forged material presented

In the event of misconduct or fraudulent or forged material is presented, no refund will be granted.

1.13 Singapore Consumer Protection Laws

This policy, and the availability of complaints and appeals processes, does not remove the right of the student to take action under Singapore’s consumer protection laws.

1.14 Special circumstances

In special circumstances the Pro Vice-Chancellor and President or nominee may increase the amount of any refund provided. If a larger refund is approved, a fee (up to S\$550) may still be charged.

1.15 Non-refundable Fees

Fees for consumable goods or services would not be refundable. The list of non-refundable fees for consumable goods or services are listed in Schedule C of Standard PEI-Student Contract.

Financial information continued

Refund procedure

Students may apply for a refund by submitting an Application for Refund of Fees form via e-mail to finance@curtin.edu.sg. The form is available in Curtin Singapore website <https://students.curtin.edu.sg/student-essentials/forms-and-documents/>. An application for refund will normally be processed within 7 working days from the date a complete application is received by the Finance Department. Please note that the omission of pertinent information or relevant documentation will delay the processing of the application.

The student refund will be made via electronic funds transfer to the bank account nominated on the application form.



Campus security and safety



Fire evacuation procedure/plan

In the event of an emergency, a staff member will direct any person to their assigned assembly points to follow the fire emergency procedures in a quick and orderly manner. A successful evacuation will rely on students and staff following the procedures below.

Upon hearing of the Fire Alarm Bell:

- be aware of an emergency situation occurring
- keep calm
- evacuate the classroom/office
- evacuate via the nearest safe exit or fire stairs. There are safe exit staircases located on every level at the building, along with a fire exit route map.
- DO NOT use the lift
- proceed to the designated assembly points
- DO NOT re-enter the building until directed by an Authorised Personnel.
- CALL 995 for any emergencies.

CCTVS

Curtin Singapore has CCTVs around the campus, these CCTVs are coloured and night enabled which allows 24 hours, 7 days a week recordings. These CCTVs are in placed to protect not only Curtin Singapore's property but all of it students, staff and visitors.

Quality assurance

Feedback management

The feedback management is a system of collecting, responding to and analysing feedback with the objective of achieving quality enhancement. To be an effective education quality assurance system, the feedback (which includes complaints, compliments, and information sharing) management system adopts the following attributes:

- All feedback received are acknowledged and evaluated for follow-up action.
- Any action taken is recorded and made known to the person giving the feedback.
- All complaints are resolved within a reasonable time frame (within 21 days).

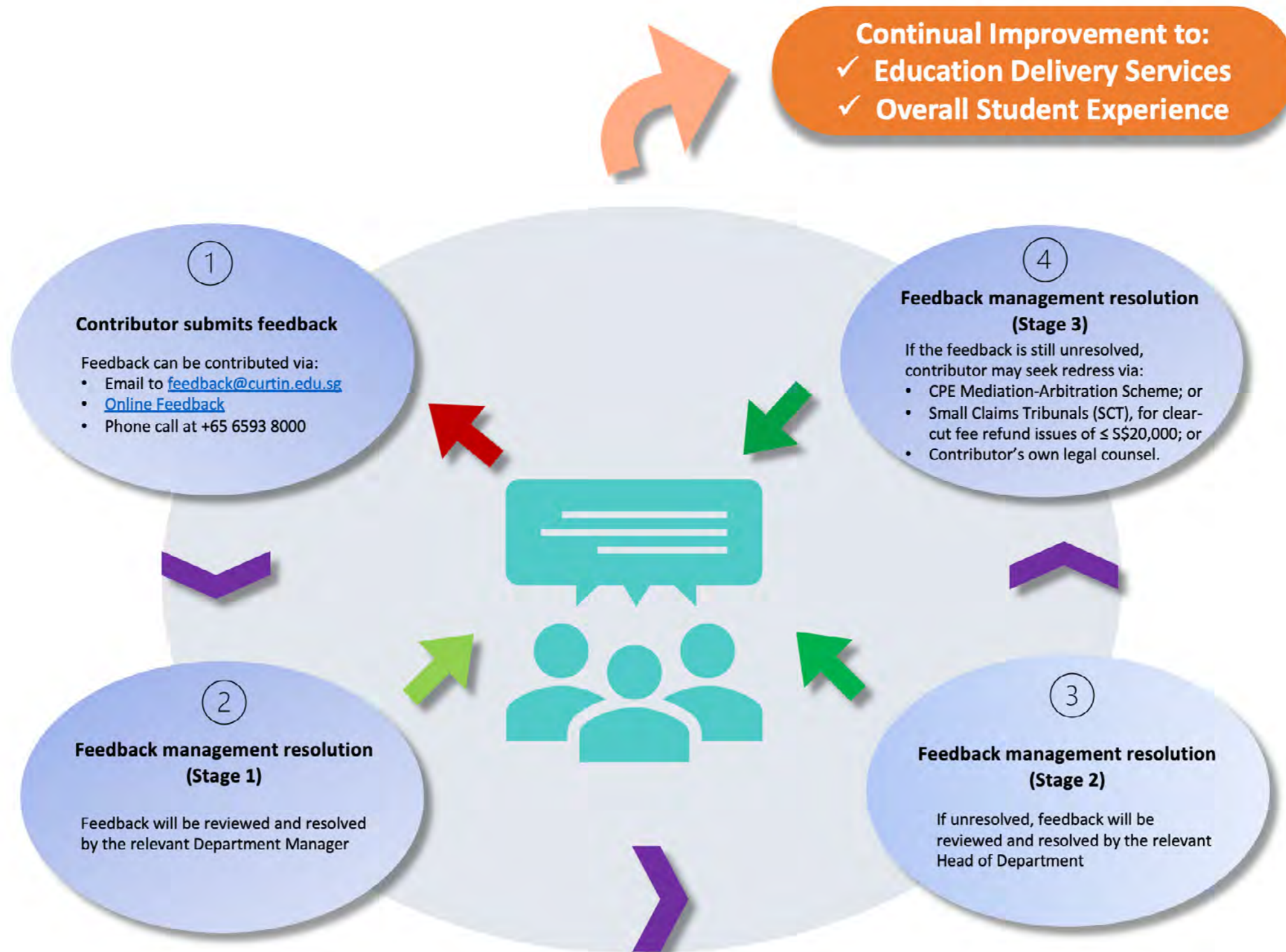
The feedback management also performs the following functions:

- acts as an effective mechanism in understanding the changing needs of the students and stakeholders, thereby helping in designing appropriate interventions.
- monitor the efficiency and effectiveness of processes with the objective to achieve continual improvement in the delivery of education services

All students are strongly encouraged to participate and contribute to the feedback management system to support and realise the continual improvement goal. You may submit your feedback via the following channels:

- Email feedback@curtin.edu.sg
- Telephone call to 65938000
- Fill up a Feedback Form. The form can be downloaded at <http://students.curtin.edu.sg/wp-content/uploads/sites/27/2020/09/Feedback-form.pdf>

Quality assurance continued



Quality assurance continued

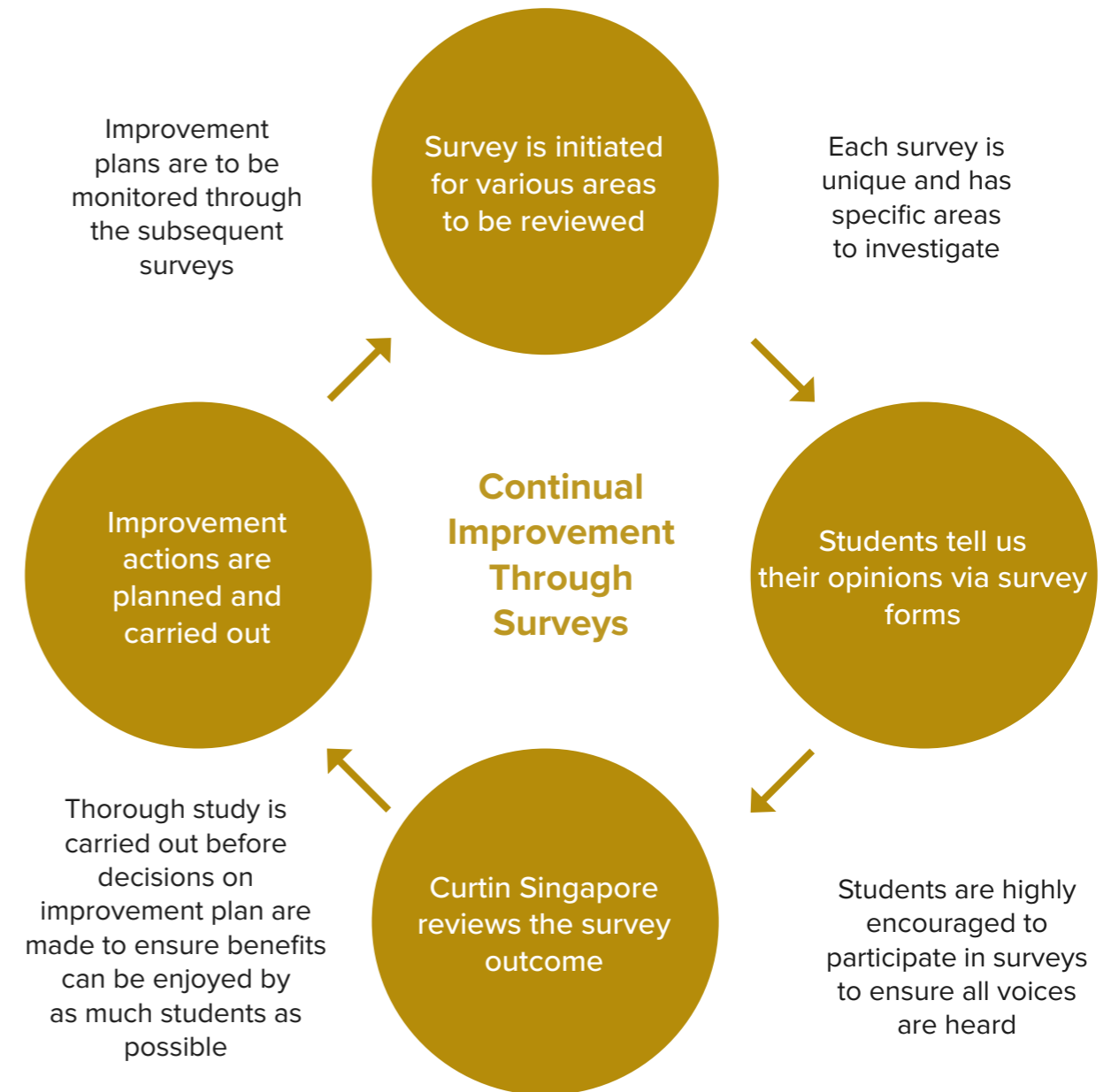
Understanding the effect of course contents, academic staff and facilities have on students has become a vital part of the Curtin Singapore’s improvement measures. This has resulted in Curtin Singapore implementing a suite of regular student feedback surveys as part of the continual improvement process.

Student surveys are powerful tools to help Curtin Singapore to gather valuable data which allows for an in-depth analysis of the overall campus climate, at the same time rendering a representative picture of student views. We use the analysed results obtained in each survey to review our processes, course materials, teaching methods, etc. to ensure every student enjoys high quality education services.



Student Surveys

Survey methodology:



Quality assurance continued

Committee for Private Education

The Committee for Private Education (CPE) is a government agency appointed by the SkillsFuture Singapore* (SSG) to carry out its functions and powers relating to private education under the Private Education Act**. Sanctioned with the legislative power, CPE regulates the private education sector, provide student services, consumer education and facilitate capability development efforts to uplift standards in the local private education industry.

The regulatory initiative comprise the mandatory Enhanced Registration Framework (ERF) which sets out the basic standards that a Private Education Institution (PEI) would need to adhere to in order to operate and the EduTrust Certification Scheme (EduTrust) which is a quality assurance scheme that differentiate private schools according to their quality in education and improvements leading to a good education outcome. For more information regarding CPE's support and services, please go to <https://www.ssg.gov.sg/cpe/pei.html>

Note:




* The SkillsFuture Singapore (SSG) is a statutory board under the Ministry of Education (MOE). SSG plays a key role in the quality assurance for private education institutions and adult training centres to ensure that students and working adults have access to high quality, industry-relevant training throughout life.

** The Private Education Act is an Act to provide for the regulation and accreditation of private education institutions so as to ensure the provision of quality education thereafter and for matters connected therewith.

Contact information

CONTACT INFORMATION		CONTACT INFORMATION	
General Enquiries	Email: info@curtin.edu.sg Email: studentconnect@curtin.edu.sg Tel: (65) 6593 8000 Fax: (65) 6593 8001	IT Support	Email: itsupport@curtin.edu.sg
Academic Services (Enrolment, timetable, Change of Major, Leave of Absence, Transfer of Campus, Course Withdrawal, Credit for Recognised Learning, Student's Pass renewals, student contracts)	Email: academic@curtin.edu.sg	Library	Email: library@curtin.edu.sg
Examination and Assessments (Academic Misconduct, Academic Status, Application for Assessment Extension, Results, Supplementary or Deferred Exams)	Email: assessments@curtin.edu.sg	Student Activities and Events	Email: SEE@curtin.edu.sg
Attendance	Email: attendance@curtin.edu.sg	Graduation	Email: graduations@curtin.edu.sg
Appeals	Email: appeals@curtin.edu.sg	Career Services	Email: careers@curtin.edu.sg
Finance (Fee Protection Scheme Insurance matters)	Email: finance@curtin.edu.sg	Counselling Services	Email: counselling@curtin.edu.sg
		Accommodation assistance	Email: accommodations@curtin.edu.sg
		Feedback, compliments and suggestions	Email: feedback@curtin.edu.sg

Contact information continued

SOCIAL MEDIA		
	Facebook	facebook.com/CurtinSingapore
	Instagram	instagram.com/CurtinSingapore
	YouTube	youtube.com/CurtinSingapore



Disclaimer Notice

Information in this publication is correct at the time of printing and valid for 1 year but may be subject to change.

In particular, the University reserves the right change the content and/or method of assessment, to change or alter tuition fees of any unit of study, to withdraw any unit of study or program which it offers, to impose limitations on enrolment in any unit or program, and/or to vary arrangements for any program. This material does not consist of legal or professional advice. Curtin accepts no responsibility for and makes no representations, whether express or implied, as to the accuracy or reliability in any respect of any material in this publication. Except to the extent mandated otherwise by legislation, Curtin does not accept responsibility for the consequences of any reliance which may be placed on this material by any person. Curtin will not be liable to you or to any other person for any loss or damage (including direct, consequential or economic loss or damage) however caused and whether by negligence or otherwise which may result directly or indirectly from the use of this publication.

This publication is copyright. Apart from any fair dealing for the purposes of private study, research, criticism or review, as permitted under the Copyright Act, no part may be reproduced by any process without written permission. Enquiries should be directed to Curtin Singapore.

Curtin University and Curtin Singapore are trademarks of Curtin University

CRICOS Provider Code 00301J

Curtin Education Centre ERF No: 200804822R (20 May 2022 to 19 May 2026)